

FIG. 1

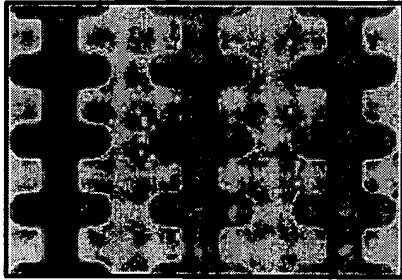


FIG. 2A

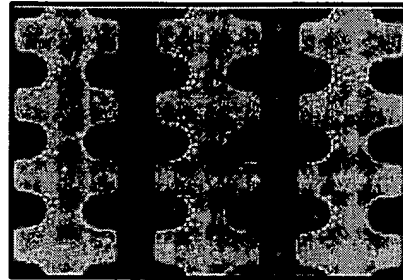


FIG. 2B

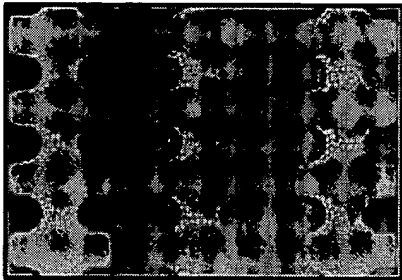


FIG. 2C

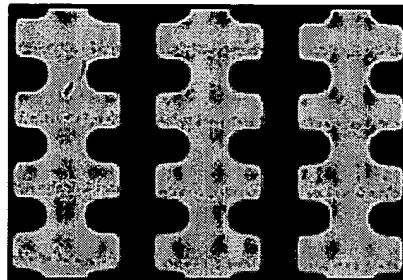


FIG. 2D

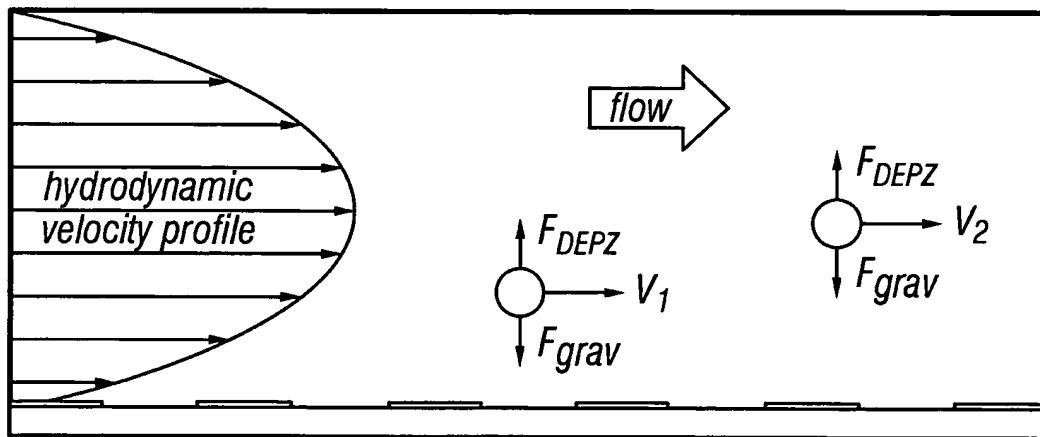


FIG. 3



Separation Summary

Experiment Parameters	Cell Types	Ratio (before)	Purity (after)	Separation Time (min)
15-40 kHz, 5 min; 5 kHz, 7 min	MDA435 CD34+ Cells	2 : 3	99% 99.2%	12
5 kHz, 30 min	MDA435 Erythrocytes	1 : 1	99.9% 99.9%	30
15-35 kHz, 5 min; 5 kHz, 7 min)	MDA435 T-lymphocytes	2 : 3	98% 92%	12
20-50 kHz, 10 min; 5 kHz, 6 min	Monocytes T-lymphocytes	1 : 1	98% 92%	16
20-40 kHz, 10 min; 5 kHz, 6 min	Monocytes B-lymphocytes	1 : 1	94% 92%	16
40-50 kHz, 8 min; 5 kHz, 5 min	Granulocytes T-lymphocytes	1 : 1	94% 87%	13
30-35 kHz, 8 min; 5 kHz, 5 min	Monocytes Granulocytes	1 : 1	97% 91%	13
40-55 kHz, 5 min; 25-35 kHz 5 min; 5 kHz, 5 min	T-lymphocytes Granulocytes Monocytes	8 : 8 : 1	96% 91% 58%	14
10 kHz, 25 min	Leukocytes Erythrocytes	1 : 700	5% 99.99%	25

FIG. 4

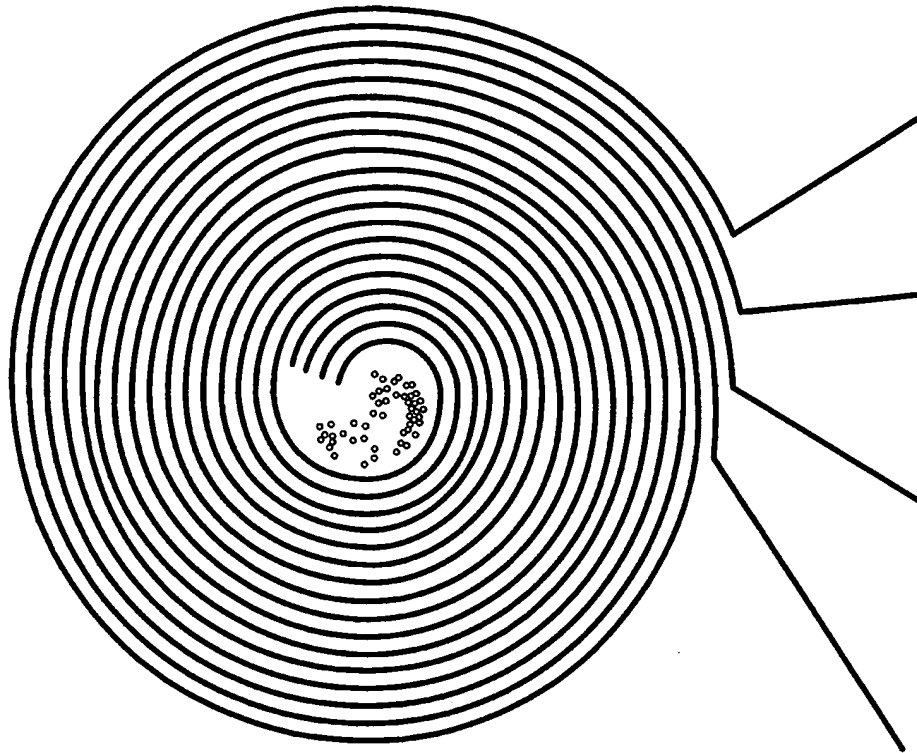


FIG. 5

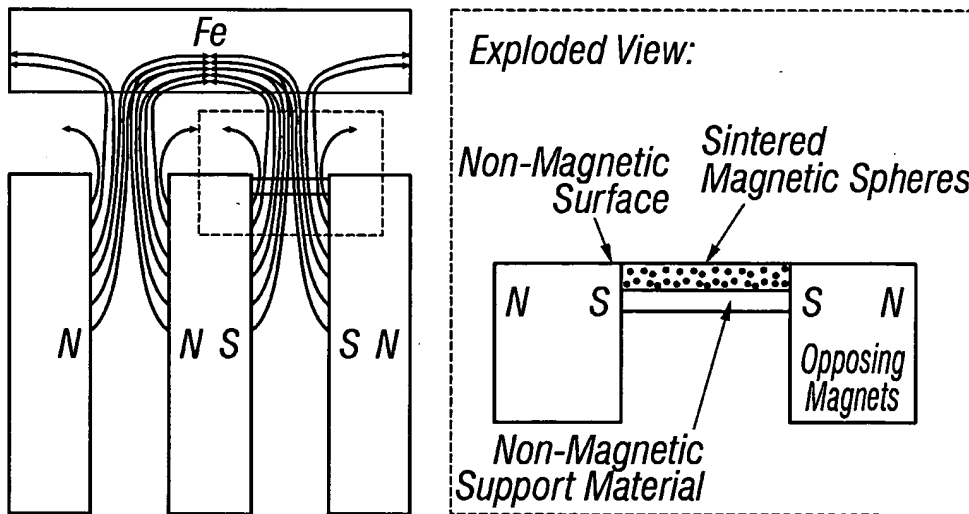


FIG. 11

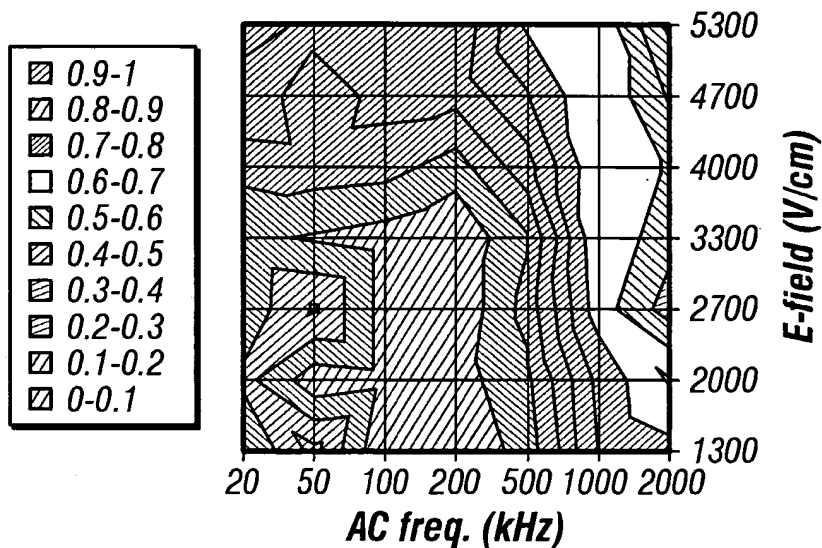


FIG. 6A

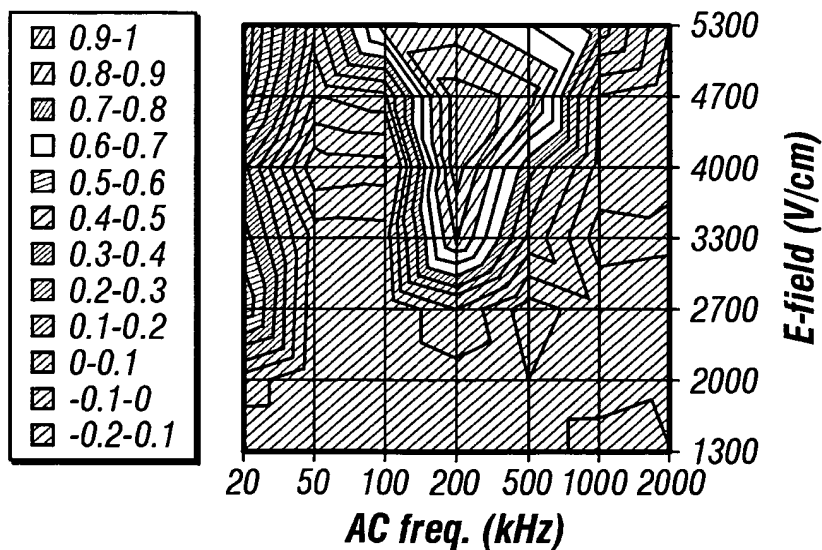


FIG. 6B

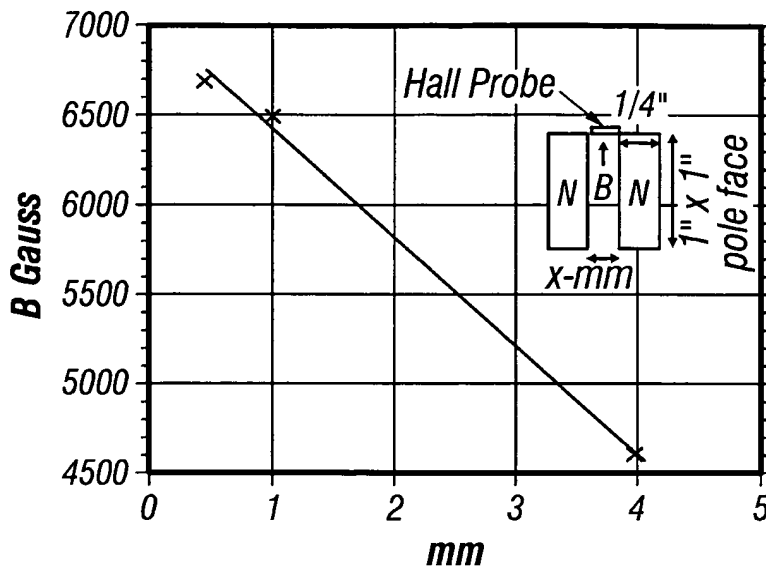
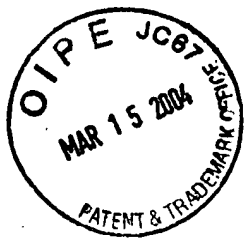


FIG. 7

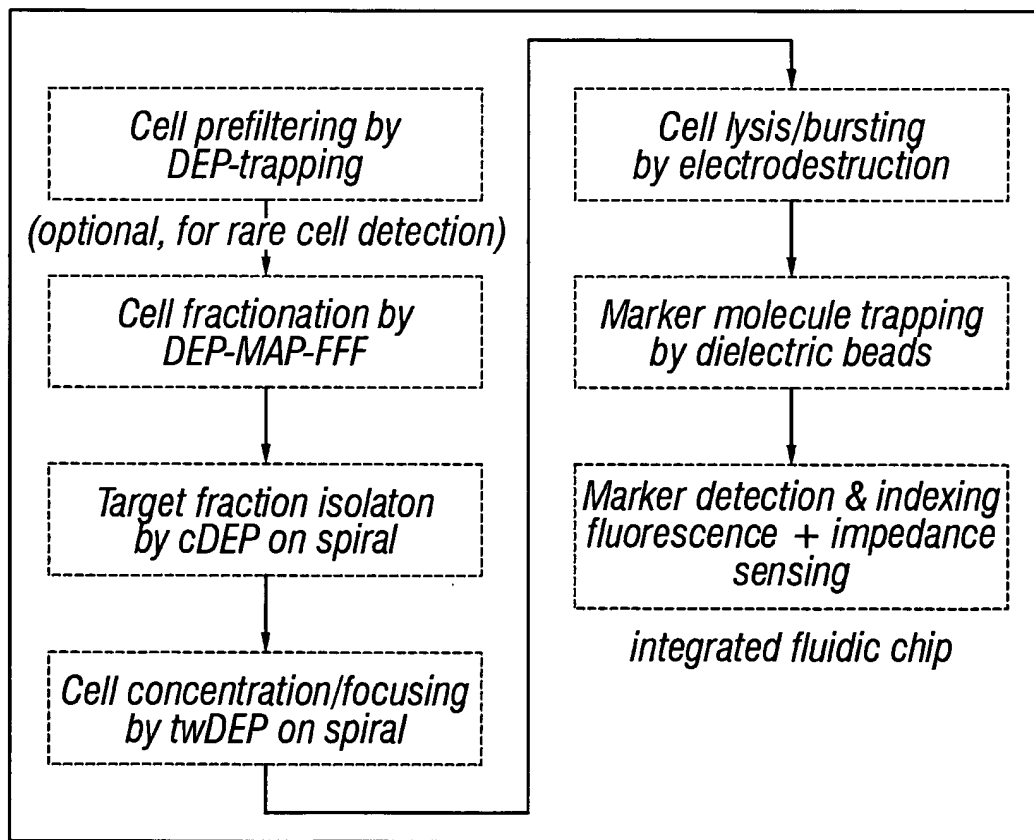


FIG. 8

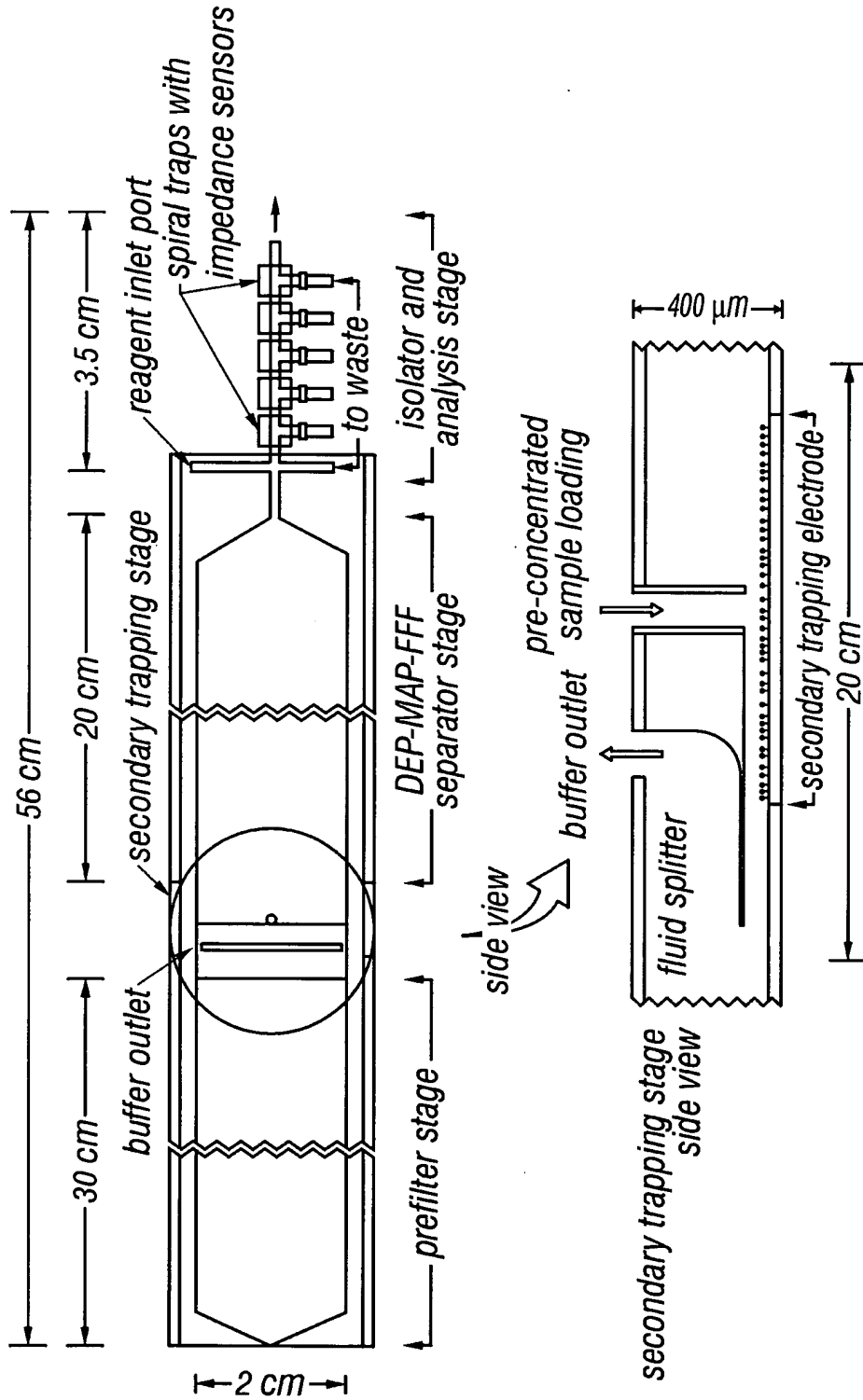
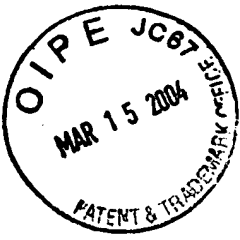


FIG. 9

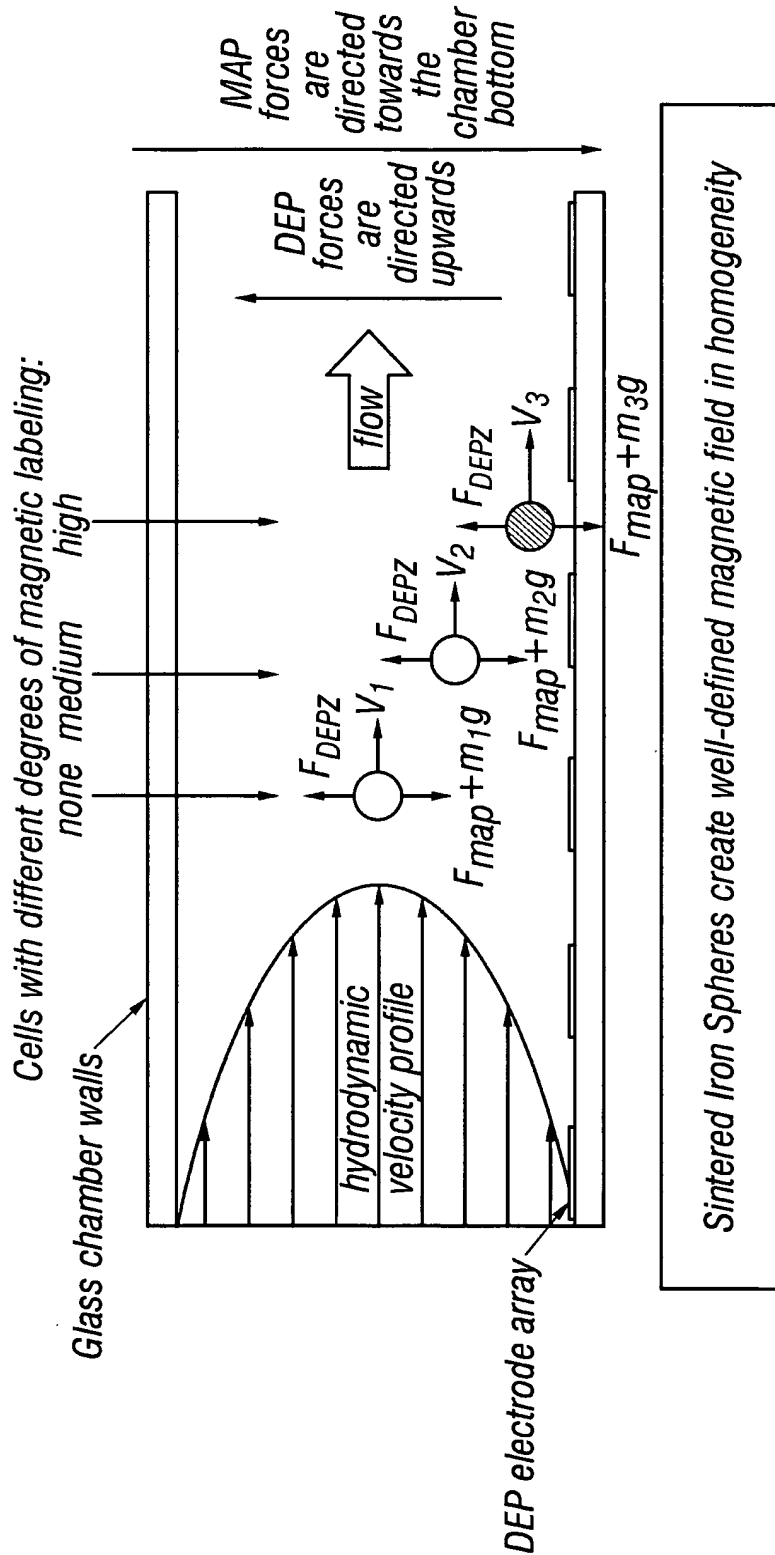


FIG. 10

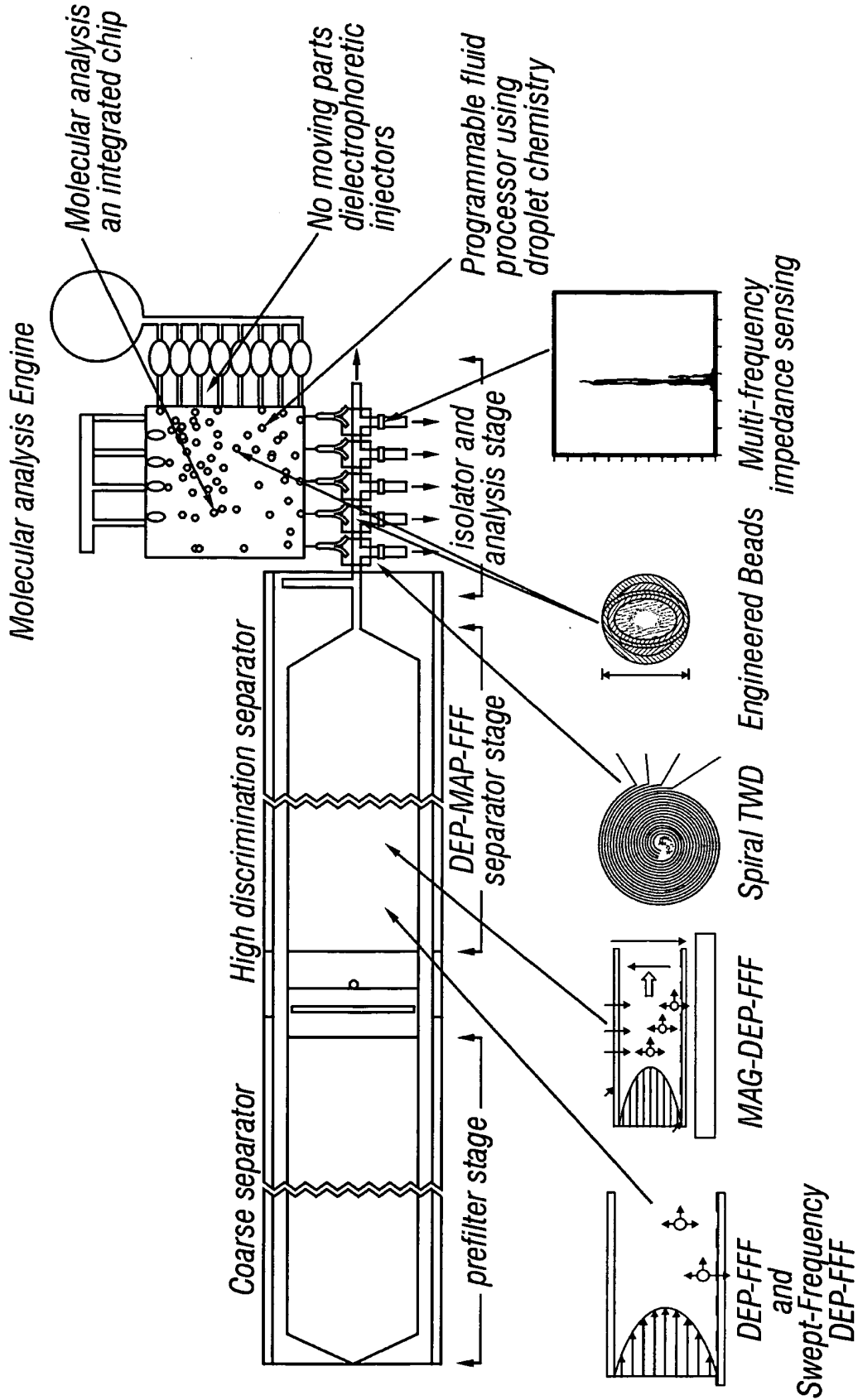


FIG. 12